



MONTHLY MEMBERSHIP PROGRESS REPORT

Results as of: 8/31/2015

Multiple District 20

LOCATION: NEW YORK

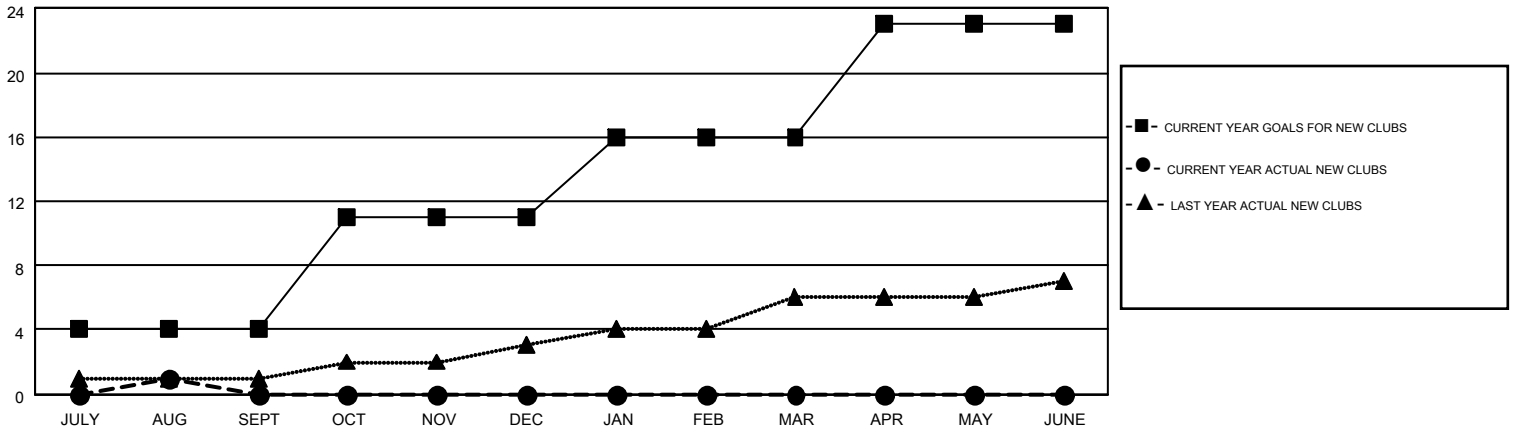
GMT: ED LECIUS

GMT CA 1

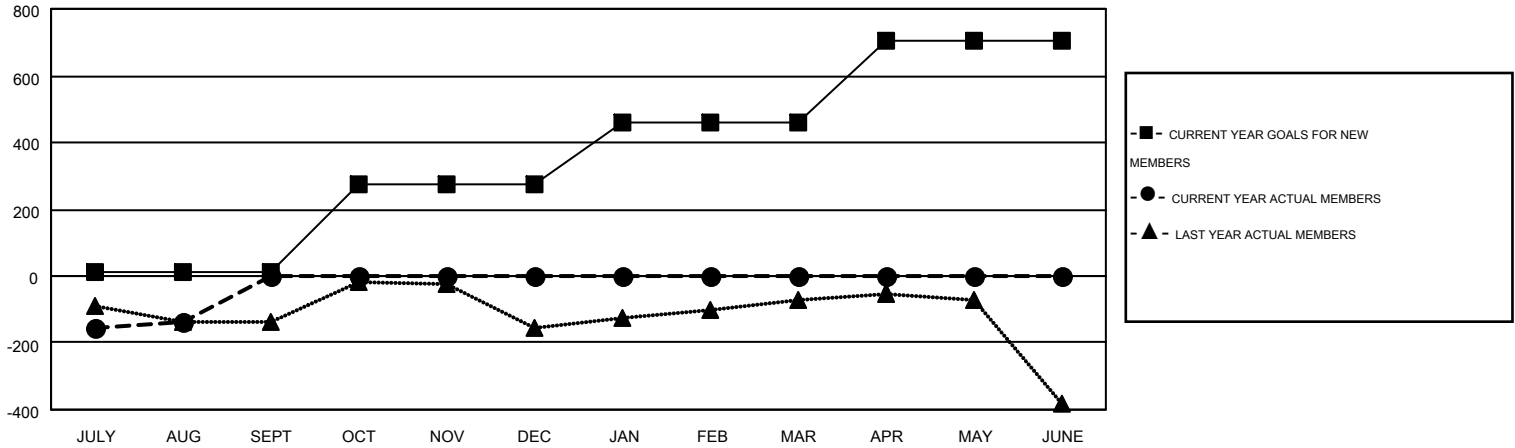
| Clubs | | | | |
|-----------------------|---------------|-----------|---------------|---------------|
| RESULTS FOR 2015-2016 | | | | |
| QUARTER | NEW CLUB GOAL | NEW CLUBS | DROPPED CLUBS | NET GAIN/LOSS |
| JULY/AUG/SEPT | 4 | 1 | 1 | 0 |
| OCT/NOV/DEC | 7 | 0 | 0 | 0 |
| JAN/FEB/MAR | 5 | 0 | 0 | 0 |
| APR/MAY/JUNE | 7 | 0 | 0 | 0 |

| Members | | | | |
|-----------------------|-----------------|-------------------------------|-----------------|---------------|
| RESULTS FOR 2015-2016 | | | | |
| QUARTER | NEW MEMBER GOAL | CHARTER AND NEW MEMBERS ADDED | DROPPED MEMBERS | NET GAIN/LOSS |
| JULY/AUG/SEPT | 11 | 168 | 308 | -140 |
| OCT/NOV/DEC | 262 | 0 | 0 | 0 |
| JAN/FEB/MAR | 186 | 0 | 0 | 0 |
| APR/MAY/JUNE | 248 | 0 | 0 | 0 |

GOALS AND ACTUAL NEW CLUBS CUMULATIVE



GOALS AND ACTUAL MEMBERS CUMULATIVE



| | |
|------------------|------------|
| DROPPED CLUBS: 1 | |
| DROPPED MEMBERS | |
| DECEASED | 29 |
| CLUB CANCELLED | 0 |
| OTHER | 279 |
| TOTAL | 308 |

| |
|---|
| 78 CLUBS OF 526 ADDED 1 OR MORE NEW MEMBERS |
| CLICK HERE FOR HEALTH ASSESSMENT DATA |

| | |
|----------------------------|----------------|
| <u>GENDER DISTRIBUTION</u> | |
| MALE | 9,550 (64.89%) |
| FEMALE | 5,168 (35.11%) |
| <u>FAMILY UNIT MEMBERS</u> | |
| FAMILY UNIT MEMBERS | 2,357 |
| HEAD OF HOUSEHOLD | 1,141 |
| NON-HEAD OF HOUSEHOLD | 1,216 |